



Stanhope Primary School - Consultation

Welcome

Engage Enrich Excel Academies (EEEE) Trust is inviting your views on the proposed Hounsme Fields Primary School, with the backing of the Hampshire County Council, with the aim of opening in September 2025. The primary purpose of this s10 consultation is to inform the decision about whether to enter into a funding agreement with the Secretary of State for Education to establish the school.

The new Stanhope Primary school is proposed to open as a one form entry school (expanding to two form entry) along with a Resource Provision for pupils who will have an Education Health Care Plan (EHCP) whose primary area of need is likely to fall within the category of Social, Emotional and Mental Health (SEMH).

EEEE values your opinions and thoughts and is committed to ensuring that the community remains central to the new school. We are offering opportunities to engage with the Trust through:

- **Completing an on-line Survey**, [Link to Survey](#)
- **Consultation event on Thursday 19 September 2024, 17.30 – 19.30 pm**, Cambridge Primary School, Queen's Ave, Aldershot GU11
- **By Email to:** info@stanhope.school
- **By post to:** The CEO, Engage Enrich Excel Academies, 181 Frimley Road, South Camberley Primary & Nursery School Junior Site, Camberley, Surrey, GU15 2QB

You are warmly welcome to engage and give your views in whatever manner best suits you.

To find out more about the school, including full details of this consultation, please visit www.stanhope.school. Paper copies are available by contacting the EEEA office on 01276 423040.

We have contacted many individual, institutions and community groups around the vicinity of the school in an effort to ensure that that this consultation is as comprehensive as possible. We would greatly appreciate your assistance in furthering this aim by sharing this consultation with anyone you feel may be interested. **The consultation will run from 8th July to 30th September 2024 with a report prepared shortly thereafter.**

Regards

The Stanhope Primary team



CEO Welcome

Stanhope Primary School believes in providing a nurturing environment where children explore and understand the world around them. As part of the Wellesley development, the school will integrate into the community, opening with one reception class in September 2025 and expanding annually.

We aim to inspire children to dream and achieve their potential, fostering a cooperative partnership with families. Together, we'll shape a vibrant school community that values excellence and enjoyment. Our curriculum will celebrate Aldershot's local history and the diversity of our world.

Families joining us will help build our community from the outset, benefiting from a world-class learning environment. The school building completes in July 2025, promising one of the UK's finest educational facilities this year. Join Stanhope Primary School for a rewarding and inspiring journey ahead.

We look forward to working with our families, challenging the children and shaping a curriculum that enables all pupils to achieve their potential.

Kind regards

David Harris

“Education is not the learning of facts, but the training of the mind to think.”

Albert Einstein



Mission Statement:

- At Stanhope Primary School, we are committed to nurturing a safe, inclusive, and inspiring learning environment where every child is valued and empowered to reach their full potential.
- Through innovative teaching practices, rigorous academic standards, and a focus on holistic development, we aim to foster a lifelong love of learning.
- Our dedicated staff collaborate with families and the community to cultivate responsible, compassionate, and resilient individuals who contribute positively to society.
- Together, we strive to instil core values to prepare our children to thrive in a diverse and ever-changing world."

This mission statement encapsulates the school's dedication to academic excellence, character development, and community engagement, reflecting its vision for educating young learners.

School Values:

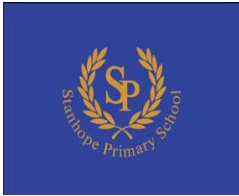
Our school values can be summarised in the word SHINE:

1. **S**uccess
2. **H**onesty
3. **I**nclusivity
4. **N**urture
5. **E**mpathy

Here's a brief explanation for each value:

- **Success:** Striving for excellence in all aspects of school life.
- **Honesty:** Promoting integrity and transparency in actions and communications.
- **Inclusivity:** Valuing and respecting diversity, ensuring everyone feels welcome.
- **Nurture:** Providing a supportive and caring environment for personal growth.
- **Empathy:** Fostering understanding and compassion among students and staff.

These values together create a positive and empowering school culture where everyone can SHINE.



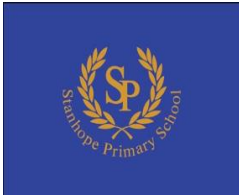
About Stanhope Primary School.

The school is part of an exciting urban development in Aldershot. The school has been designed by Hampshire County Council and in partnership with the Engage Enrich Excel Academies (EEEA) Stanhope Primary School promises to be one of the best school buildings in the country.

The building itself revolves around a court yard area and there will be two floors. The designers have created a building that appreciates the natural surroundings and allows light to flow through the building, to enhance the children's learning experience.

The school grounds are extensive and children will benefit from a large sports field, a hard surface play area and a football pitch. In addition to these great resources, children in the early years' environment will be able to play in a beautifully constructed playground aimed at developing their academic, social and spiritual skills. They will be able to experiment and explore the world around them in a safe, secure and stunning setting.

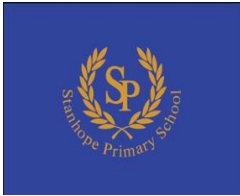




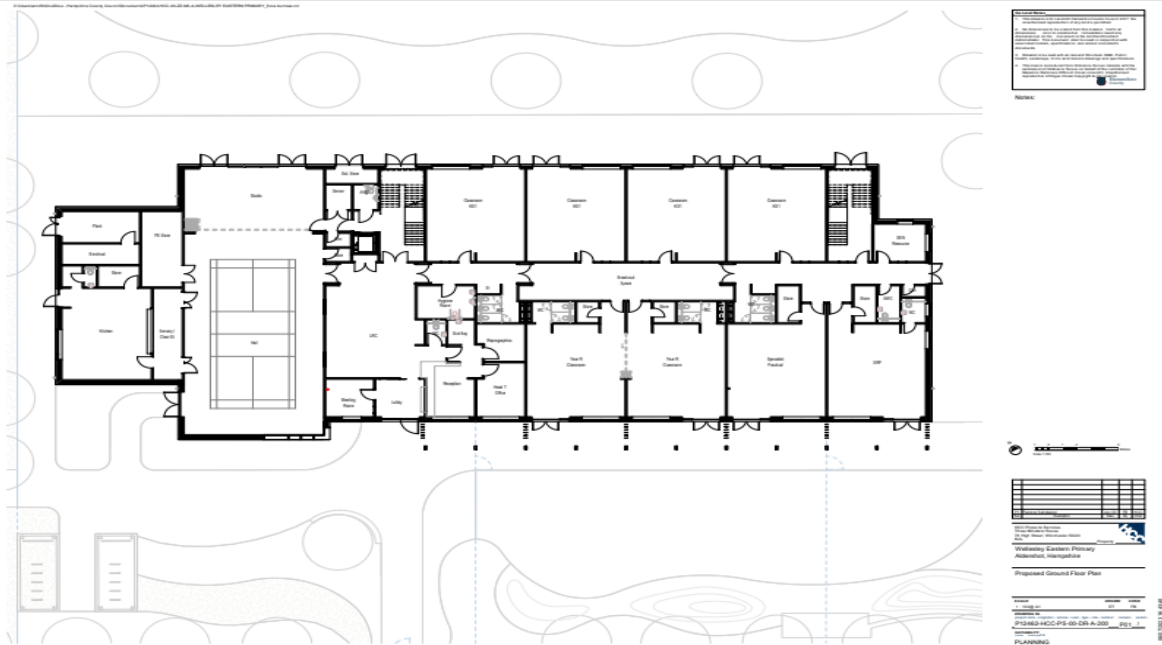
Facilities:

- Extensive playing fields
- Purpose built early years play area
- Courtyard area
- Outdoor play area - hard court
- 14 classrooms
- Specialist teaching areas for cooking, science etc.
- Learning Resource Centre
- SEMH Resource Provision

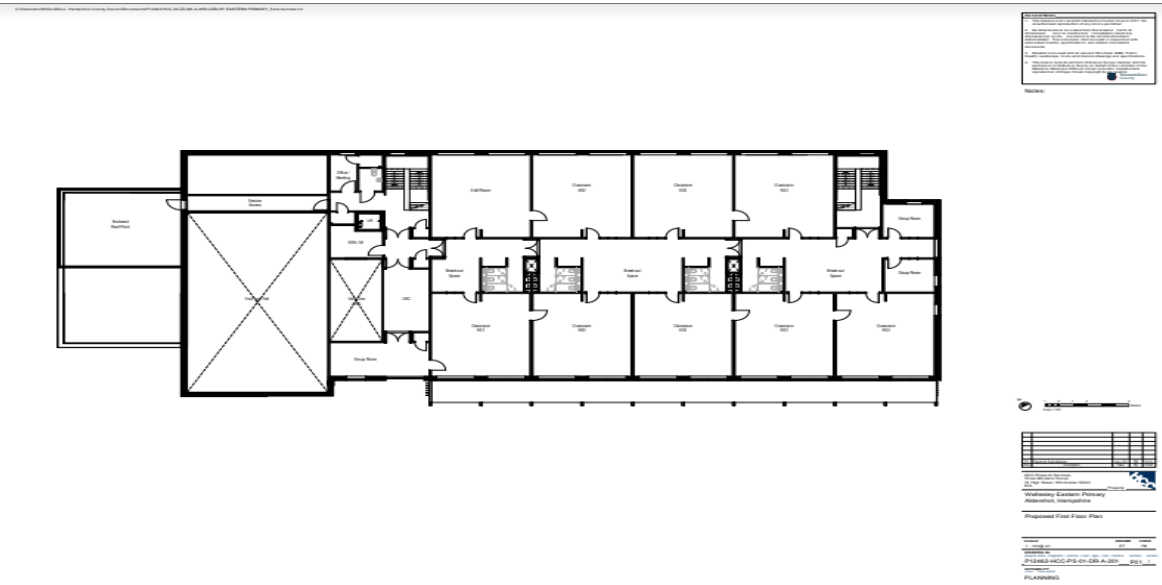


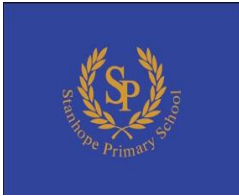


Proposed Ground Floor map



Proposed First Floor Map





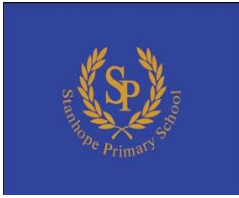
The SEMH Resource Provision (RP)

Key aims for the SEMH Resource Provision

- For children to feel happy and safe in a positive environment
- To help pupils make good progress with their learning
- To build self-esteem and confidence. To have a sense of belonging
- To enable children to build trusting relationships and play with their peers
- To support children to stay in mainstream education
- To work with all stakeholders to understand behaviour as a communication of an emotional need so we can develop consistent strategies that benefit the individual child
- To positively collaborate to ensure the RP is a beacon of success

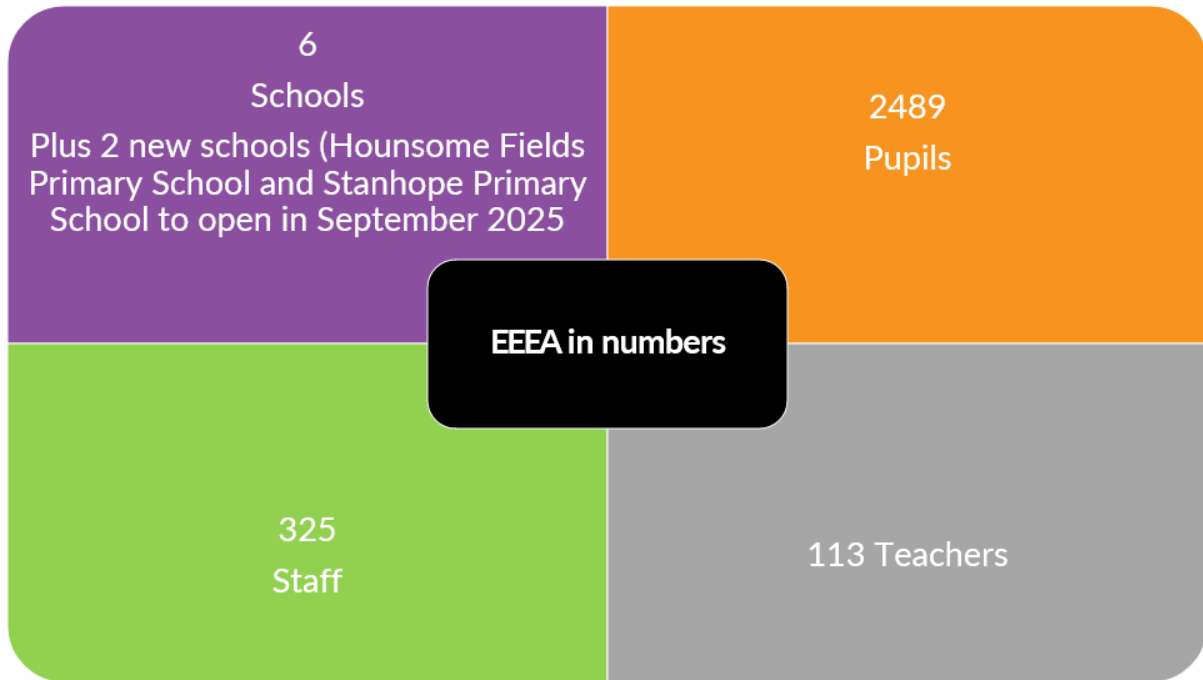
The SEMH Resource Provision Curriculum

- Children to have full access to the national curriculum at the appropriate level based on individual need.
- Modifications may include:
- Opportunities to take part in small group, individual or 1 to 1 activities
- Individual support for mainstream lessons
- Acute awareness of sensory difficulties in relation to their needs
- Work and reward system to provide motivation
- Adapted tasks to help a child feel successful, develop their concentration and be the best they can be



About EEEA

EEEA in numbers



EEEA Track record

Quotes from OFSTED Inspection from other trust schools

“Leaders strive to ensure that all pupils, including those with special educational needs and/or disabilities, **access a well-planned curriculum**. Teachers adapt learning to excite and engage pupils, helping them to make progress and remember more of the curriculum.”

“The school provides high quality pastoral support. From children’s first days at school, **staff form nurturing relationships with them and their families, built on clear communication**. Governors and trustees share school leaders’ high expectations for an inclusive learning community.”

One parent said, ‘**This school has really helped pull the community together.**’

The Cambridge Primary School, September 2022



“Leaders have a **sound knowledge of the differing needs of children with special educational needs and/or disabilities (SEND)** as they move through the school. Leaders are skilled in identifying individual needs and they support teachers to adapt their teaching appropriately.

This enables pupils with SEND to learn effectively alongside their peers. Staff feel well supported by leaders. All this has helped to create a positive environment where pupils are ready and eager to learn.”

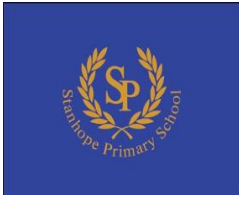
One parent said, ‘They go above and beyond expectations.’

South Camberley School, May 2022

“Pastoral care is a strength of the school. Many parents appreciate the focus on pupils’ well-being. **Staff with relevant expertise provide therapeutic care for pupils in multi-sensory areas, such as the ‘tranquillity cove’ and ‘zen den’.** Leaders show dedication to finding the best for every pupil.”

“Expert staff provide high-quality support for pupils to help them feel good about themselves and be ready to learn. One parent said, ‘The school is a rock, they are always there for us.’ Another shared that staff ‘go above and beyond to help’.”

Westfield Primary School, September 2022

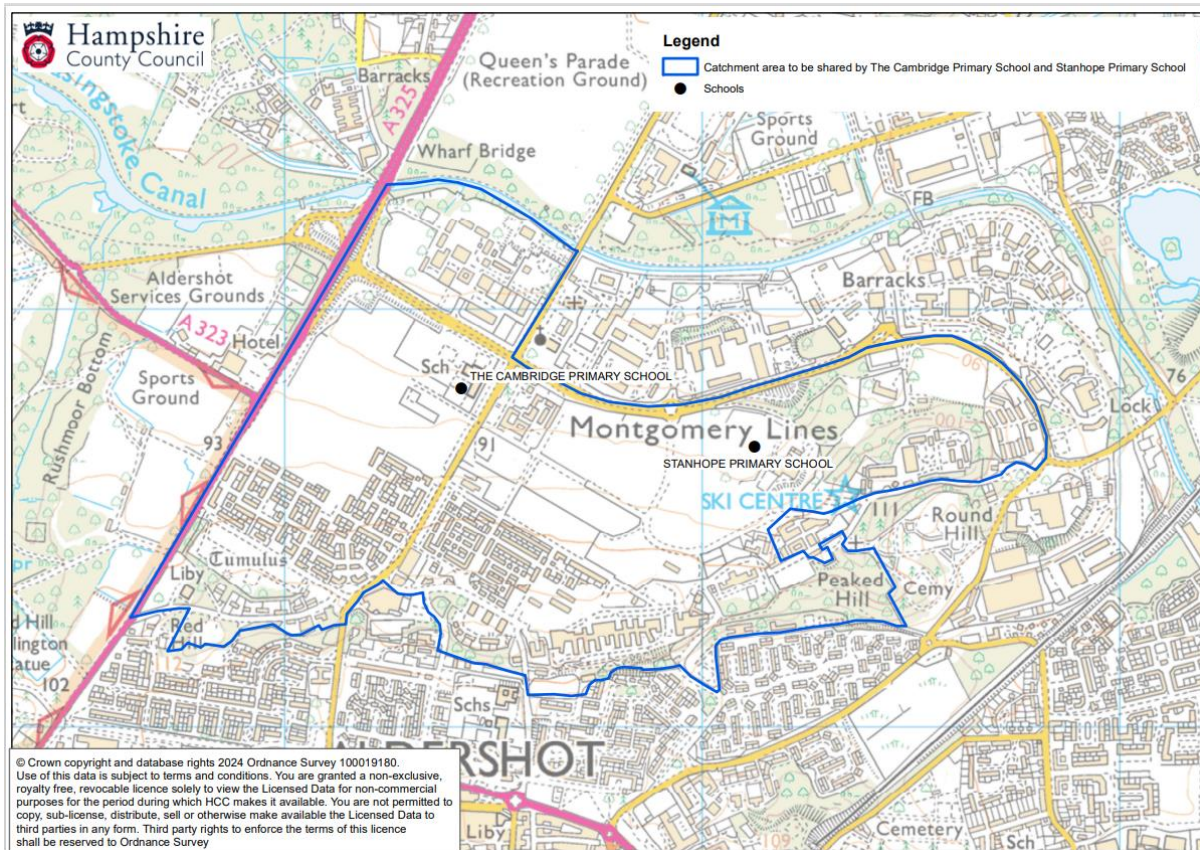


School Admission Policy 2025

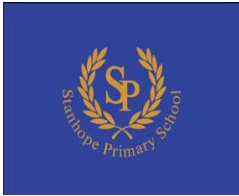
The full School Admission's Policy is [available here](#).

It has been developed to meet the needs of local children with priority being given to local children.

In particular, the catchment area for the school has been designed to meet this aim and to minimise any impact on other local schools.



Parents/Carers wishing to apply for the school for September 2025 entry, will be able to apply through Hampshire County Council ([www. Hants.gov.uk](http://www.Hants.gov.uk)) from the 1st November 2024.



Other Policies

Other sample policies can be found on the www.eeea.co.uk. EEEA encourages each school to develop policies that best fit their needs. Stanhope Primary School will be developing these sample policies so that they are adapted to meet the unique vision and ethos of the school.

Road map for opening:

- Work started on site on 1st July 2024
- The school building will be completed by June 2025
- We welcome 30 reception children in September 2025
- Applications for admissions open end October 2024
- The headteacher of the Cambridge Primary School, Mrs Sarah Kennedy will be the Executive Headteacher over both schools
- We will advertise for other staffing towards the end of 2024
- Monthly meetings with the developers, DFE and Hampshire